

### Tas Gas Networks Pty Ltd – Transmission Pipeline

#### Pipeline Information

Pipeline Class	Transmission
Nameplate rating	12.5TJ/day
Receipt points	Gawler Ulverstone Metering and Offtake Facility
Delivery points	Simplot Metering and Distribution Regulating Station, Mason Street, Ulverstone
Schematic map of the pipeline	See rear of document
Any technical or physical characteristics of the pipeline that may affect access to or use of the pipeline or the price for pipeline services on the pipeline	Length of Pipeline: 4.8km Pressures: ranges from 2,000kPa to 10,200kPa
Any policies that may affect access to or use of the pipeline or the price for pipeline services	Nil

#### Pipeline Service Information

Service name	Description	Locational limitations on availability	Priority ranking
Firm Forward	Receipt to Delivery Point gas transportation service	Limited by individual pipelines or network supply capabilities	1

### Tas Gas Networks Pty Ltd – Distribution Pipeline

#### Pipeline Information

Pipeline Class	Distribution
Quantity of natural gas that can be transported through each gate station on the distribution pipeline in any 24 hour period	Bridgewater (Hobart) - 24.09 TJ/day Bell Bay - 6.68 TJ/day Launceston - 5.90 TJ/day Westbury - 2.32 TJ/day Longford - 2.25 TJ/day Devonport - 5.56 TJ/day Ulverstone - 11.59 TJ/day Burnie - 4.18 TJ/day Wynyard - 6.68 TJ/day
Delivery points	Bridgewater (Hobart), Bell Bay, Launceston, Westbury, Longford, Devonport, Ulverstone, Burnie and Wynyard all connected to the TGP pipeline via Metering/Offtake Stations
Schematic map of the pipeline	See below and/or <a href="#">TGN Pipeline Locator</a>
Any technical or physical characteristics of the pipeline that may affect access to or use of the pipeline or the price for pipeline services on the pipeline	Length of Pipeline: 836km Pressures: Ranges from 2,500kPa; 1000kPa and 500kPa
Any policies that may affect access to or us of the pipeline or the price for pipeline services	Nil

#### Pipeline Service Information

Service name	Description	Locational limitations on availability	Priority ranking
Firm Forward	Receipt to Delivery Point gas transportation service	Limited by individual pipelines or network supply capabilities	1

NATURAL GAS RULES - USER ACCESS GUIDE  
EXTENT OF GAS ASSETS  
**BELL BAY**

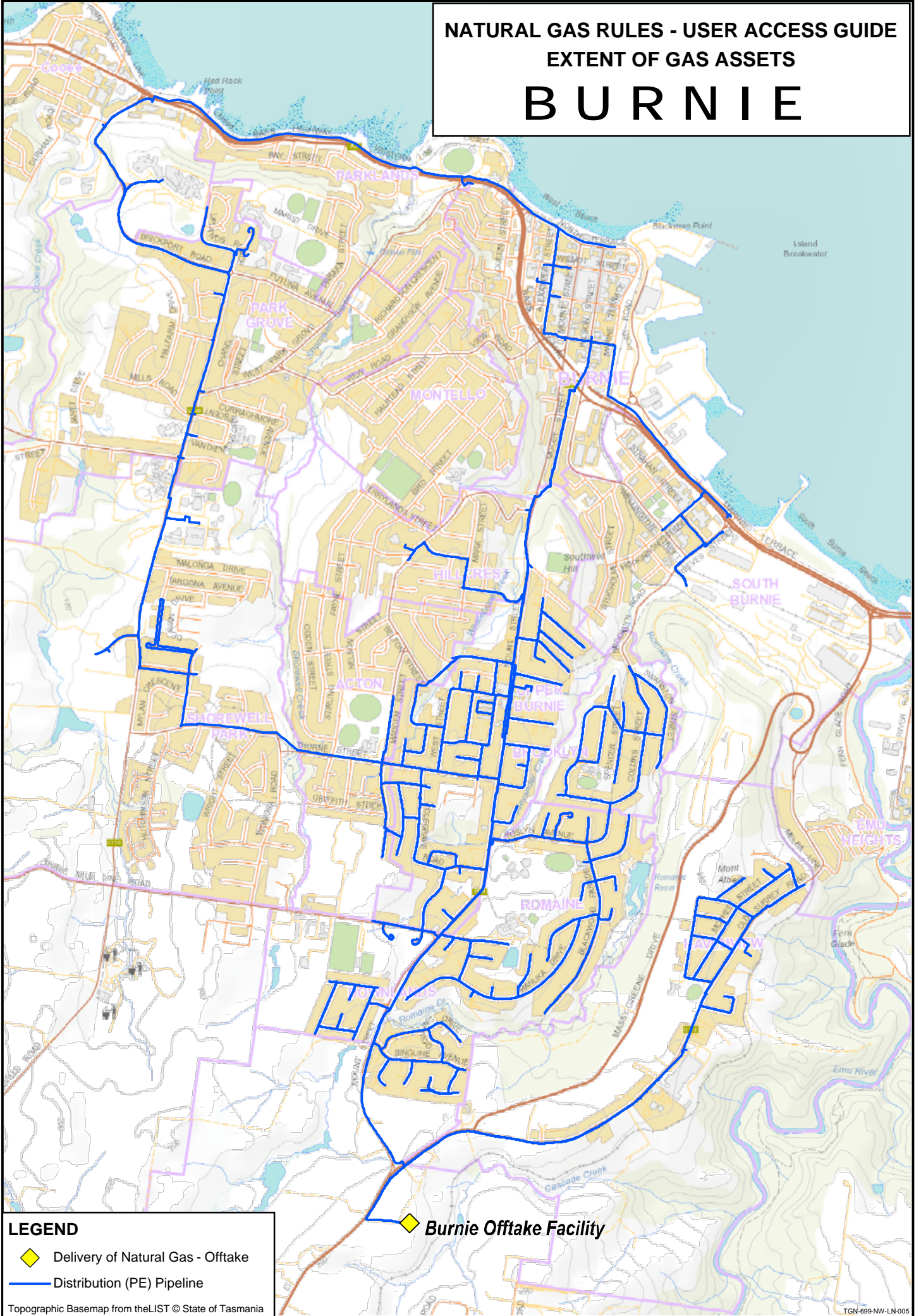


**LEGEND**

- ◆ Delivery of Natural Gas - Offtake
- Distribution (PE) Pipeline

Topographic Basemap from theLIST © State of Tasmania

NATURAL GAS RULES - USER ACCESS GUIDE  
 EXTENT OF GAS ASSETS  
**BURNIE**



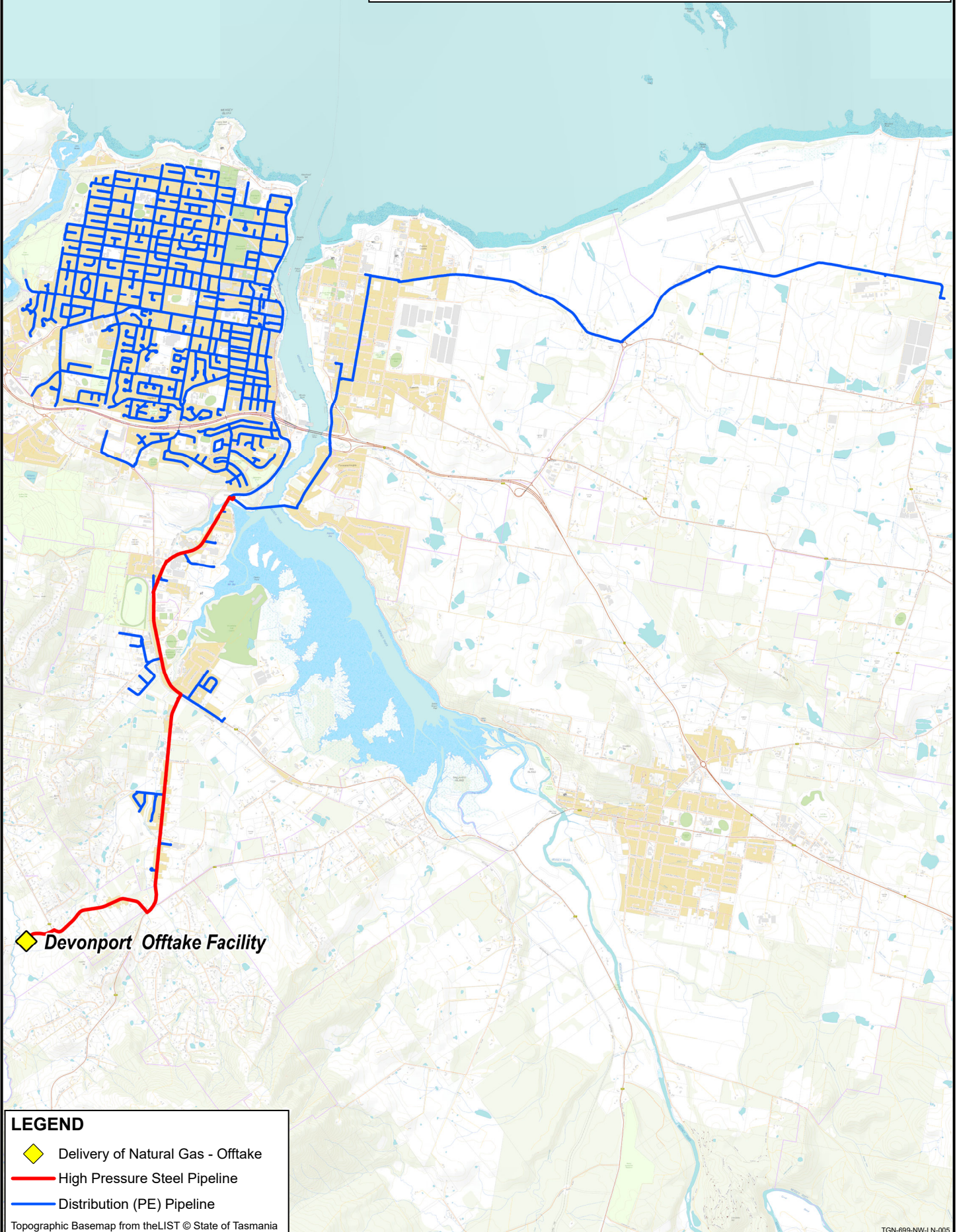
**LEGEND**

- ◆ Delivery of Natural Gas - Offtake
- Distribution (PE) Pipeline

Topographic Basemap from theLIST © State of Tasmania

NATURAL GAS RULES - USER ACCESS GUIDE  
EXTENT OF GAS ASSETS

# DEVONPORT



◆ Devonport Offtake Facility

**LEGEND**

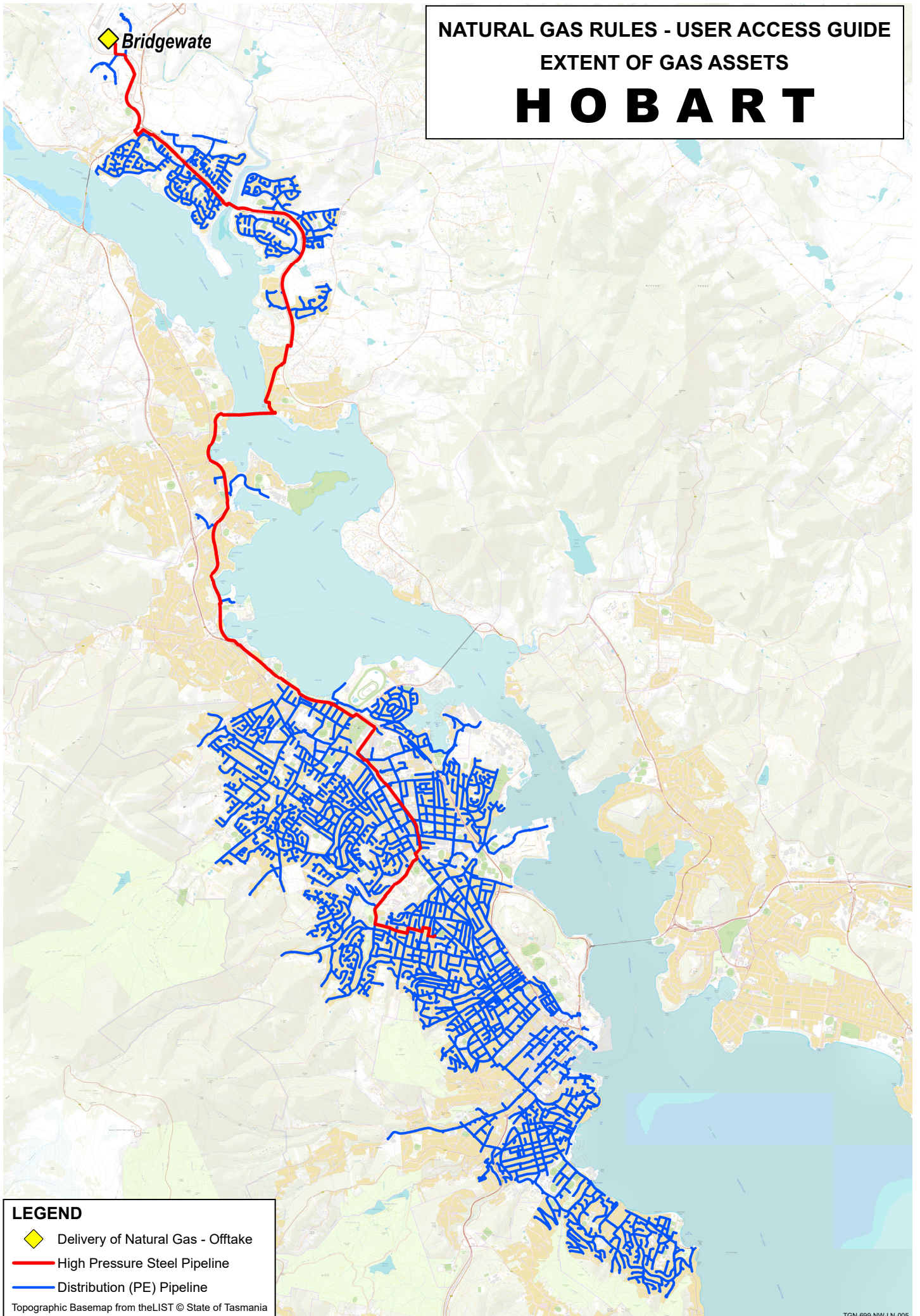
- ◆ Delivery of Natural Gas - Offtake
- High Pressure Steel Pipeline
- Distribution (PE) Pipeline

Topographic Basemap from theLIST © State of Tasmania




NATURAL GAS RULES - USER ACCESS GUIDE

EXTENT OF GAS ASSETS

# HOBART



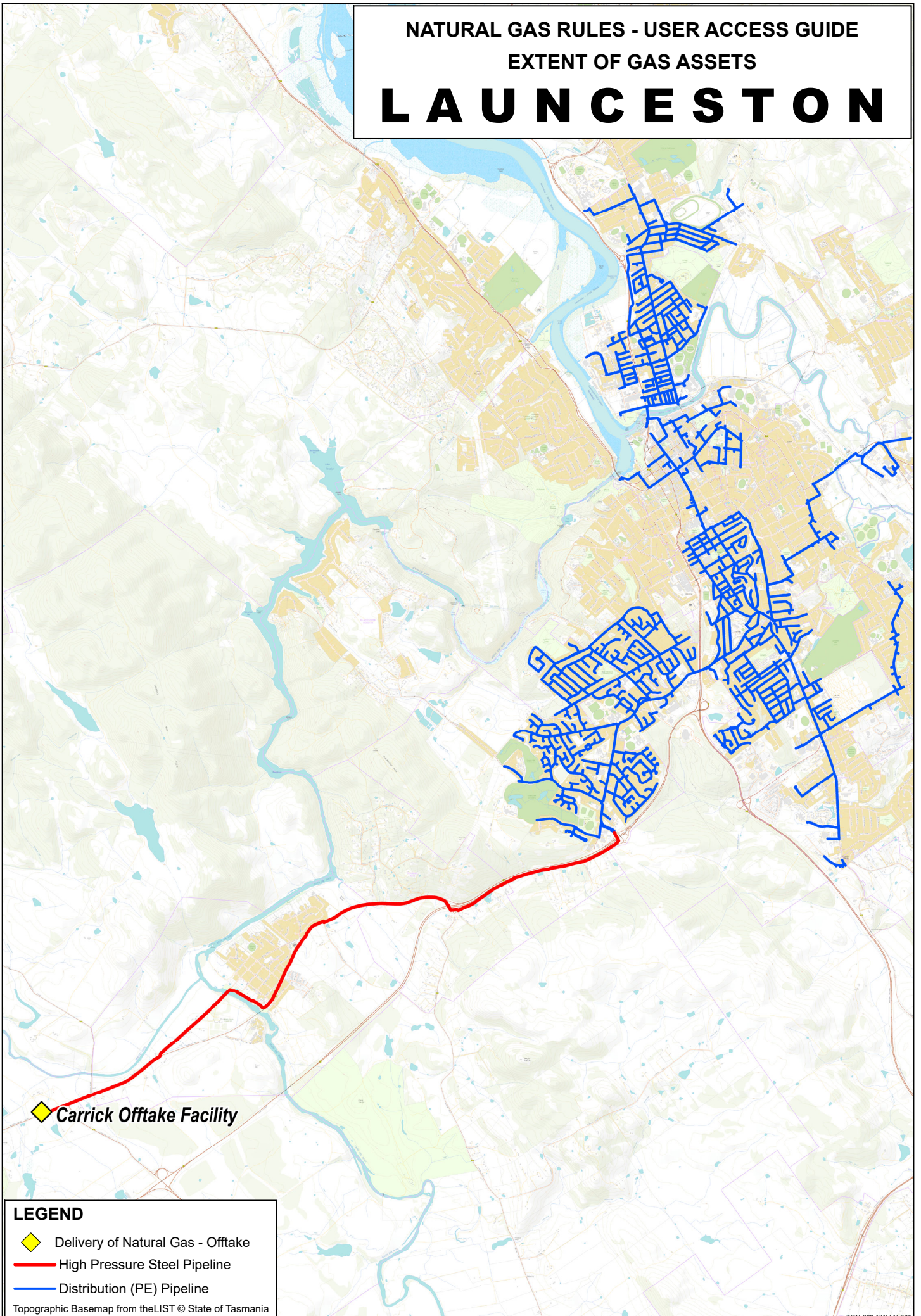
**LEGEND**

-  Delivery of Natural Gas - Offtake
-  High Pressure Steel Pipeline
-  Distribution (PE) Pipeline

Topographic Basemap from theLIST © State of Tasmania

NATURAL GAS RULES - USER ACCESS GUIDE  
EXTENT OF GAS ASSETS

# LAUNCESTON



◆ Carrick Offtake Facility

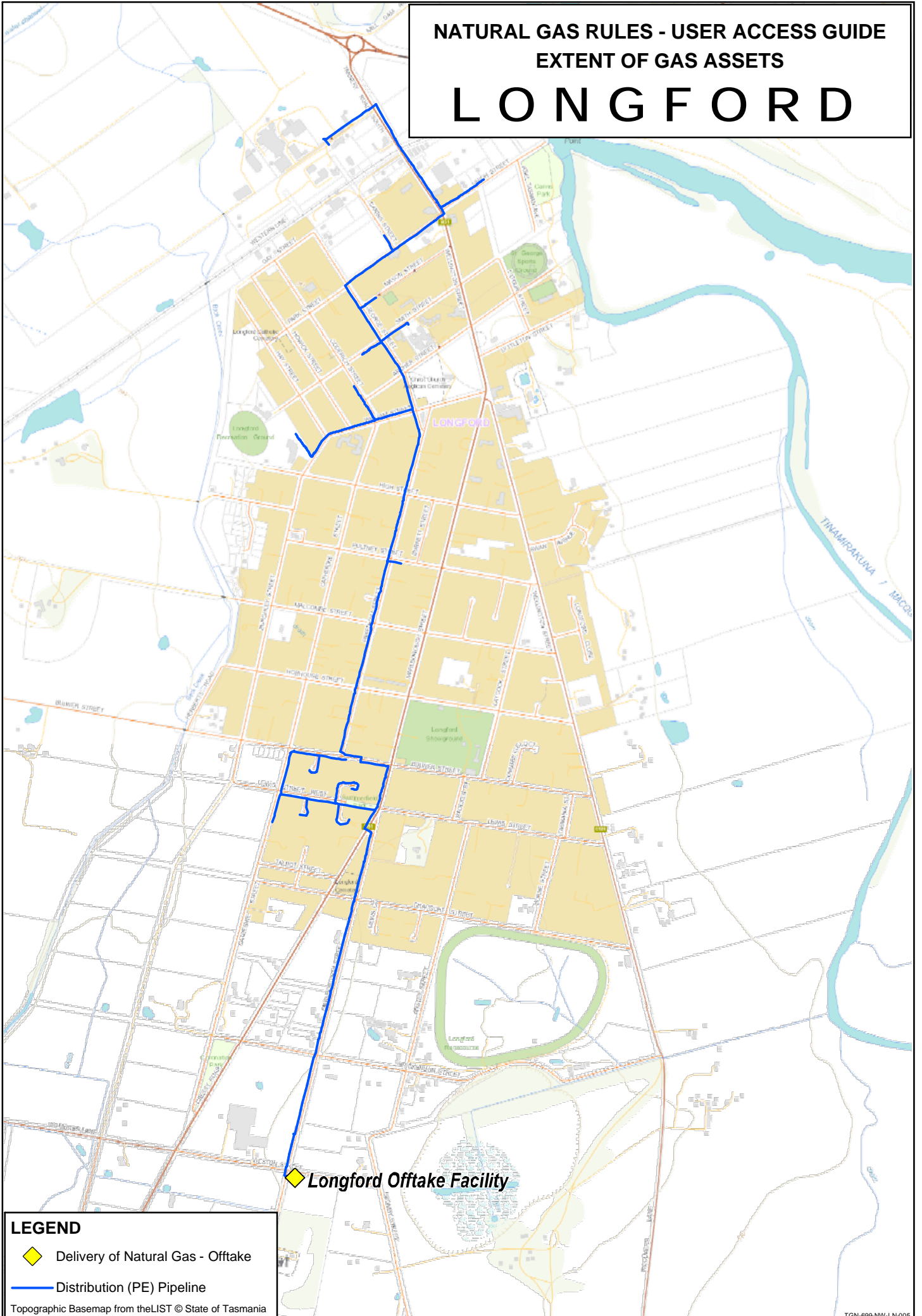
## LEGEND

- ◆ Delivery of Natural Gas - Offtake
- High Pressure Steel Pipeline
- Distribution (PE) Pipeline

Topographic Basemap from theLIST © State of Tasmania

NATURAL GAS RULES - USER ACCESS GUIDE  
EXTENT OF GAS ASSETS

# LONGFORD



**LEGEND**

- ◆ Delivery of Natural Gas - Offtake
- Distribution (PE) Pipeline

Topographic Basemap from theLIST © State of Tasmania

NATURAL GAS RULES - USER ACCESS GUIDE  
EXTENT OF GAS ASSETS  
**ULVERSTONE**



**LEGEND**

- Delivery of Natural Gas - Offtake
- Transmission Steel Pipeline
- Distribution (PE) Pipeline



Topographic Basemap from theLIST © State of Tasmania



NATURAL GAS RULES - USER ACCESS GUIDE  
EXTENT OF GAS ASSETS  
**WESTBURY**

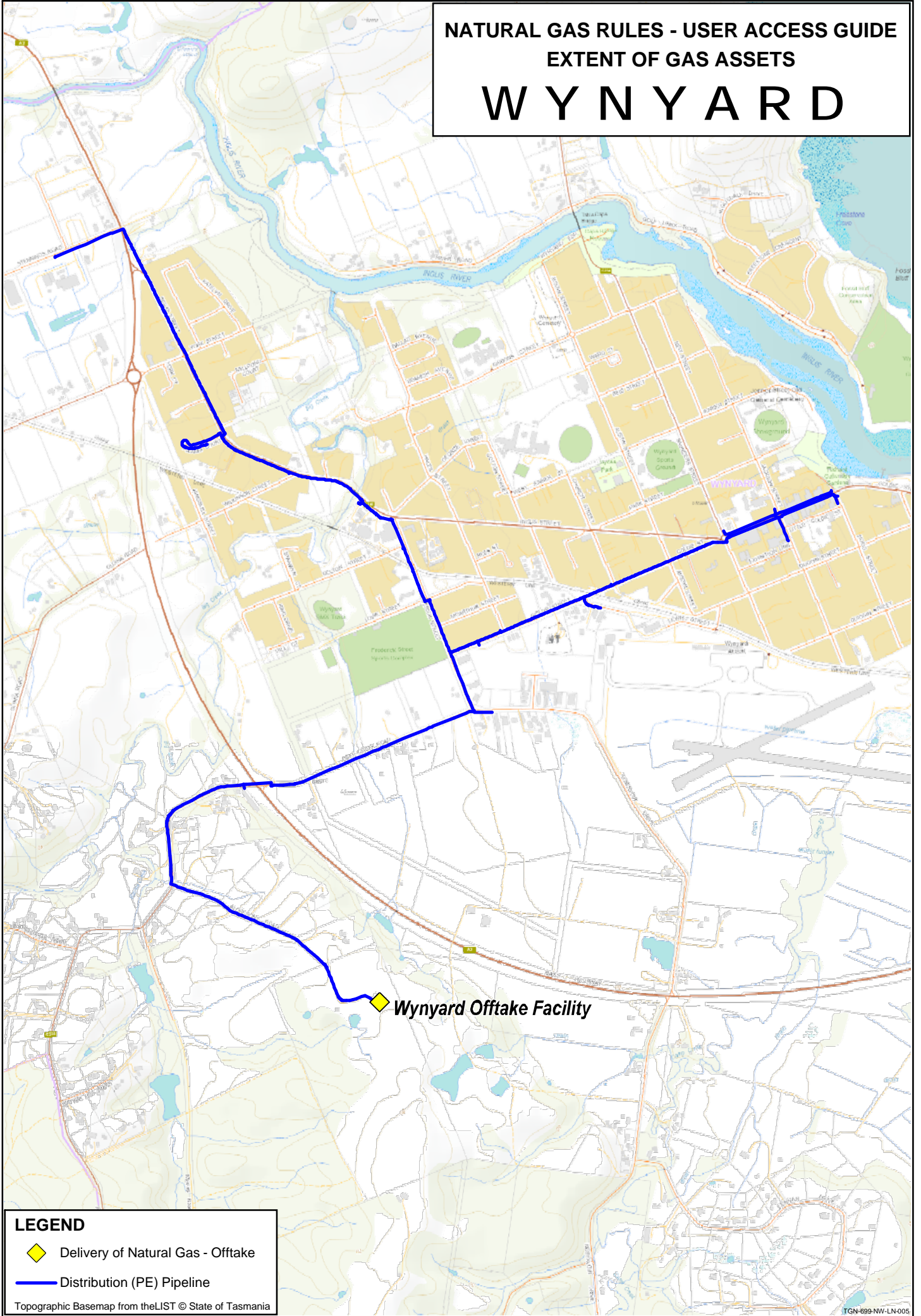


**LEGEND**

-  Delivery of Natural Gas - Offtake
-  Distribution (PE) Pipeline

Topographic Basemap from theLIST © State of Tasmania

NATURAL GAS RULES - USER ACCESS GUIDE  
EXTENT OF GAS ASSETS  
**W Y N Y A R D**



**LEGEND**

- ◆ Delivery of Natural Gas - Offtake
- Distribution (PE) Pipeline

Topographic Basemap from theLIST © State of Tasmania