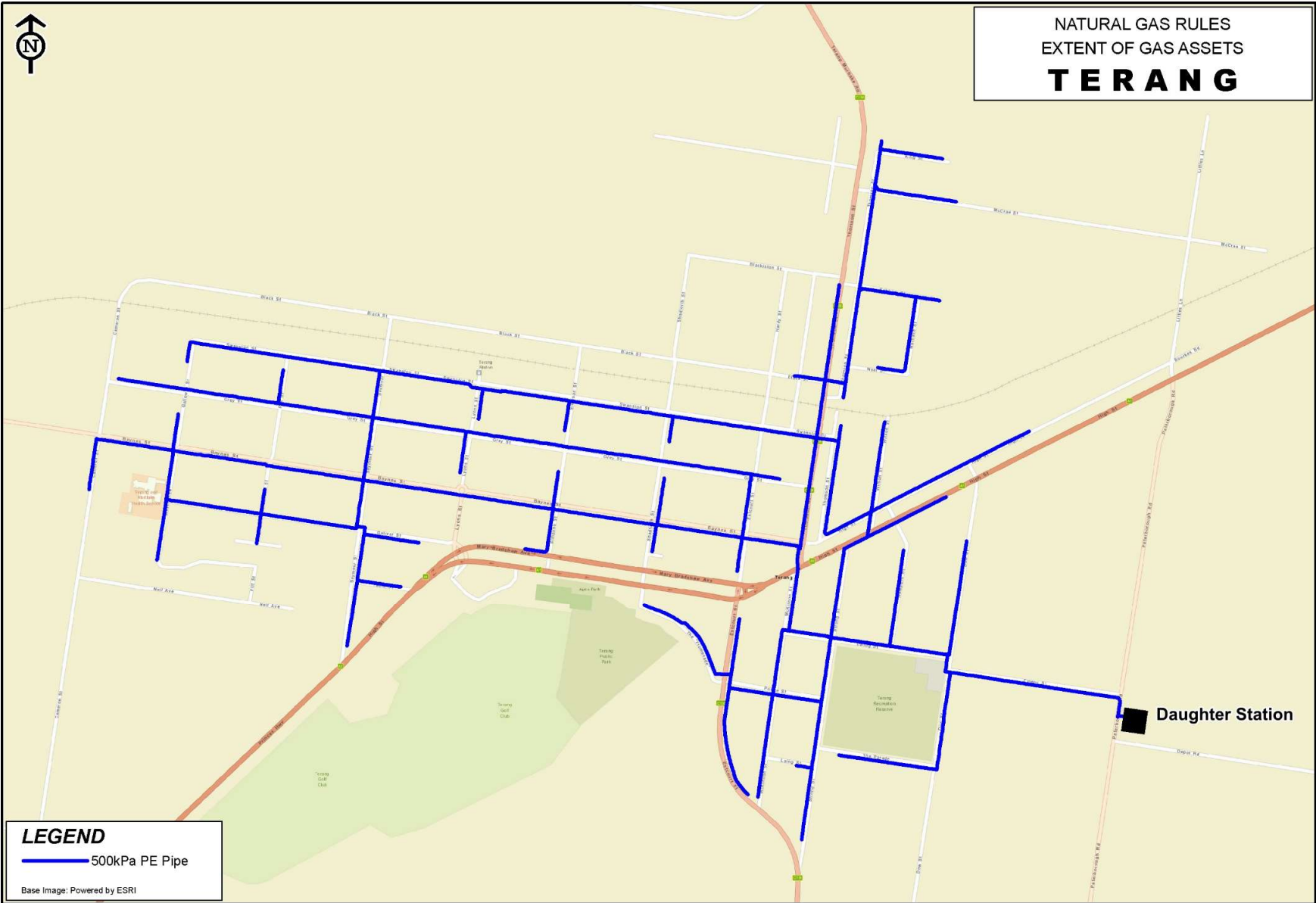


Gas Networks Victoria Pty Ltd***Pipeline Information***

Pipeline Class	Distribution		
Quantity of natural gas that can be transported through each gate station on the distribution pipeline in any 24 hour period	Terang - 145GJ/day Maldon -39 GJ/day Marong - 61 GJ/day Heathcote - 44 GJ/day Robinvale - 117 GJ/day Swan Hill - 293 GJ/day Kerang - 77 GJ/day Nathalia - 49 GJ/day Orbost - 46 GJ/day Lakes Entrance - 97 GJ/day		
Delivery points	Terang, Maldon, Marong, Heathcote, Robinvale, Swan Hill, Kerang, Nathalia, Orbost and Lakes Entrance all part of the GNV networks connected via the virtual CNG pipeline to the town Daughter Stations located within each town.		
Schematic map of the pipeline	See rear of document		
Any technical or physical characteristics of the pipeline that may affect access to or use of the pipeline or the price for pipeline services on the pipeline	Length of Pipeline: 215km across all towns Pressures: 400kPa Limited by capacity of the upstream compressor stations, transport and logistics via MEGC trailers, and on site Daughter Station storage and capacity.		
Any policies that may affect access to or use of the pipeline or the price for pipeline services	Nil		
<i>Pipeline Service Information</i>			
Service name	Description	Locational limitations on availability	Priority ranking
Firm Forward	Reticulation network throughout each of the Regional Towns	Limited to the current extent of the reticulation network in each of the Regional Towns	1



NATURAL GAS RULES
EXTENT OF GAS ASSETS
TERANG

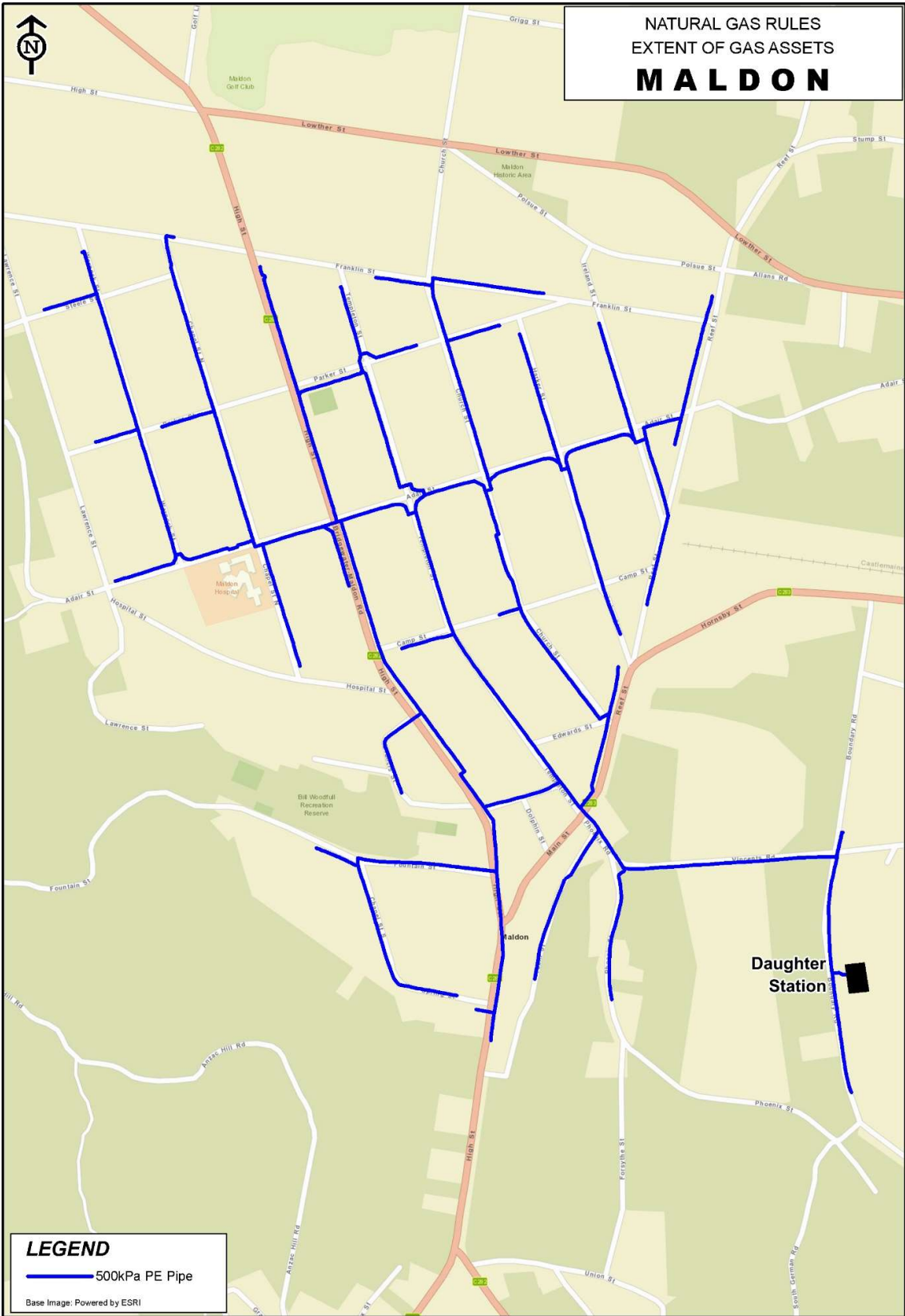


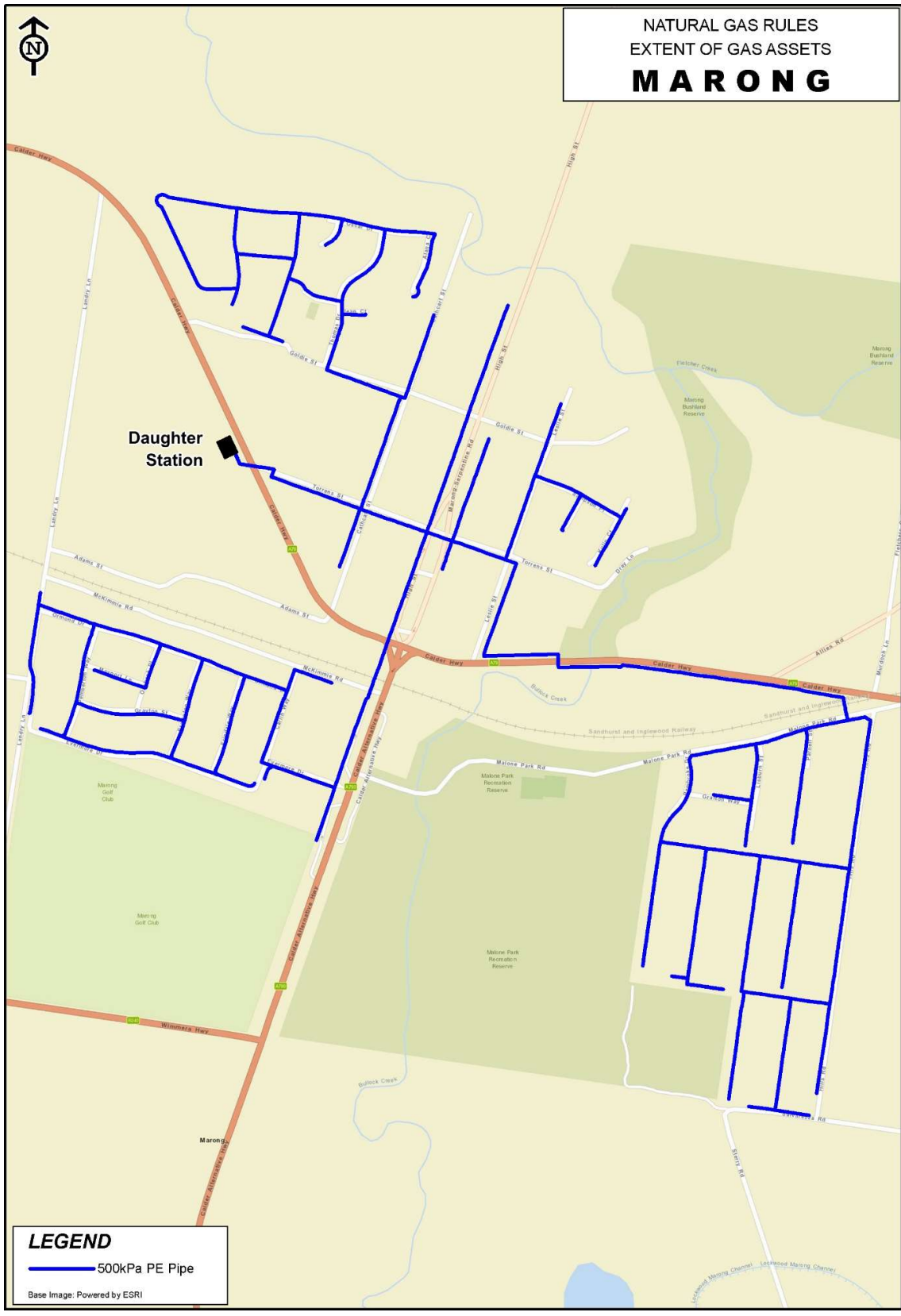
LEGEND

— 500kPa PE Pipe

Base Image: Powered by ESRI

Daughter Station





NATURAL GAS RULES
EXTENT OF GAS ASSETS
MARONG



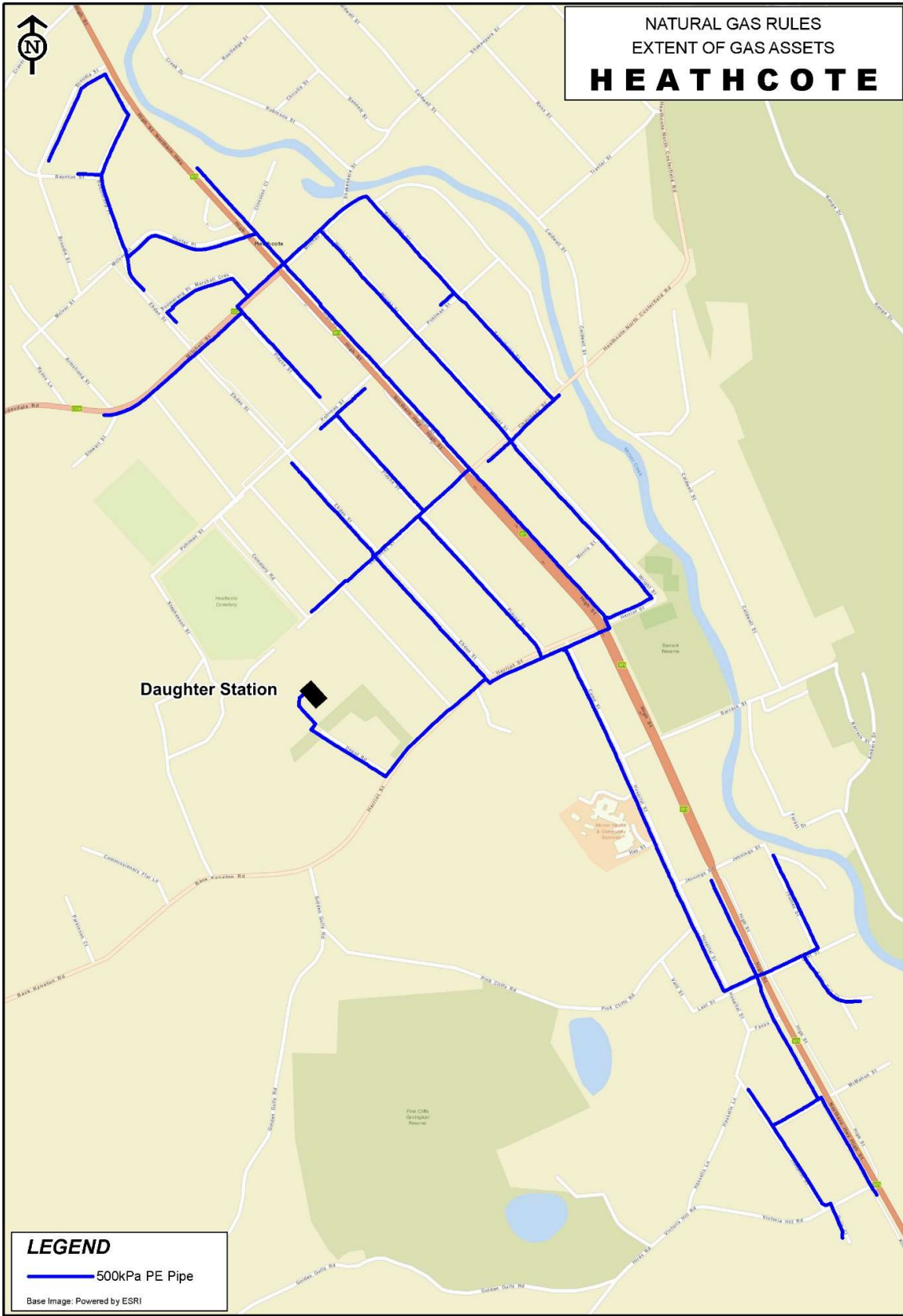
Daughter Station

LEGEND

— 500kPa PE Pipe

Base Image: Powered by ESRI

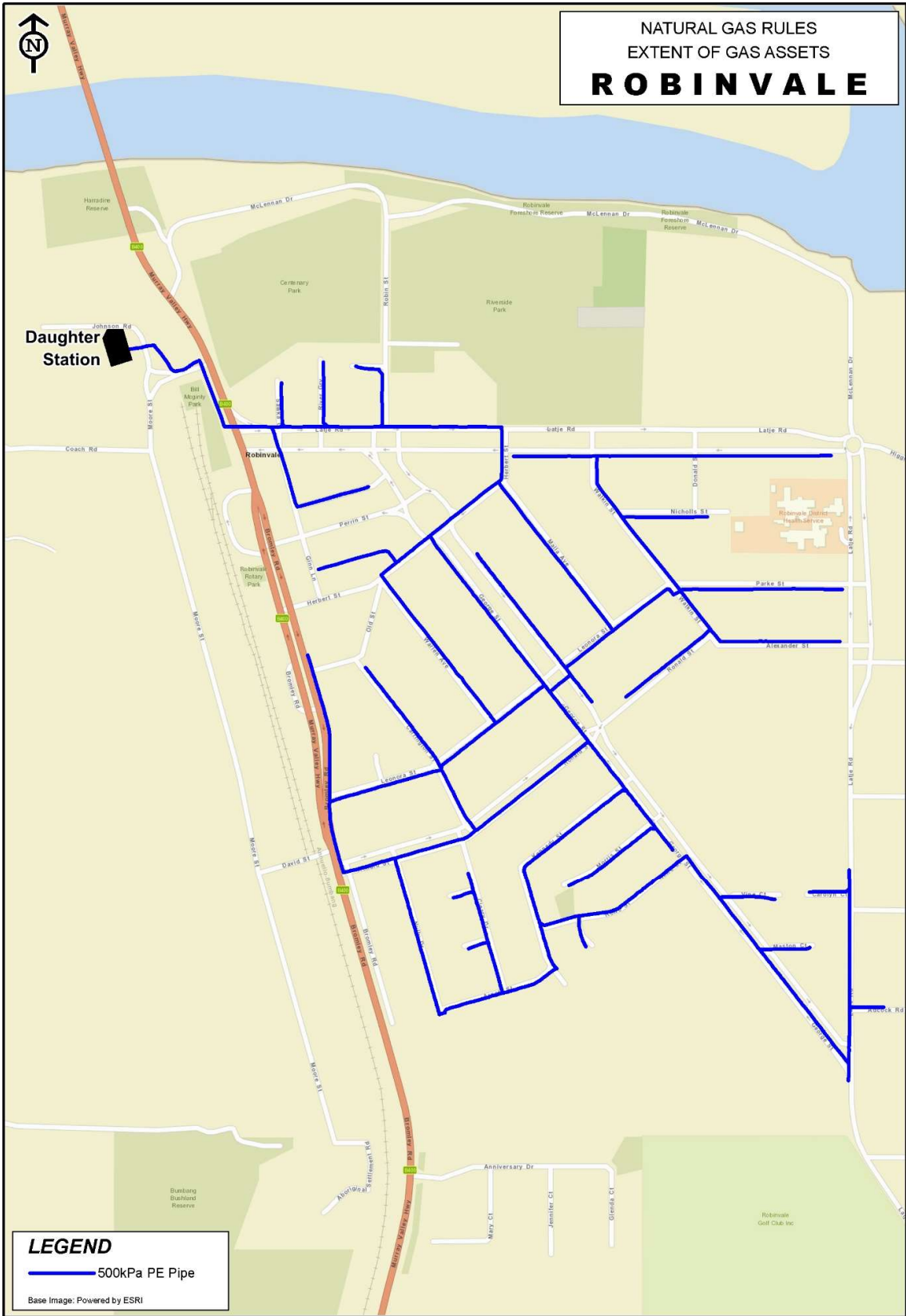
NATURAL GAS RULES
EXTENT OF GAS ASSETS
HEATHCOTE

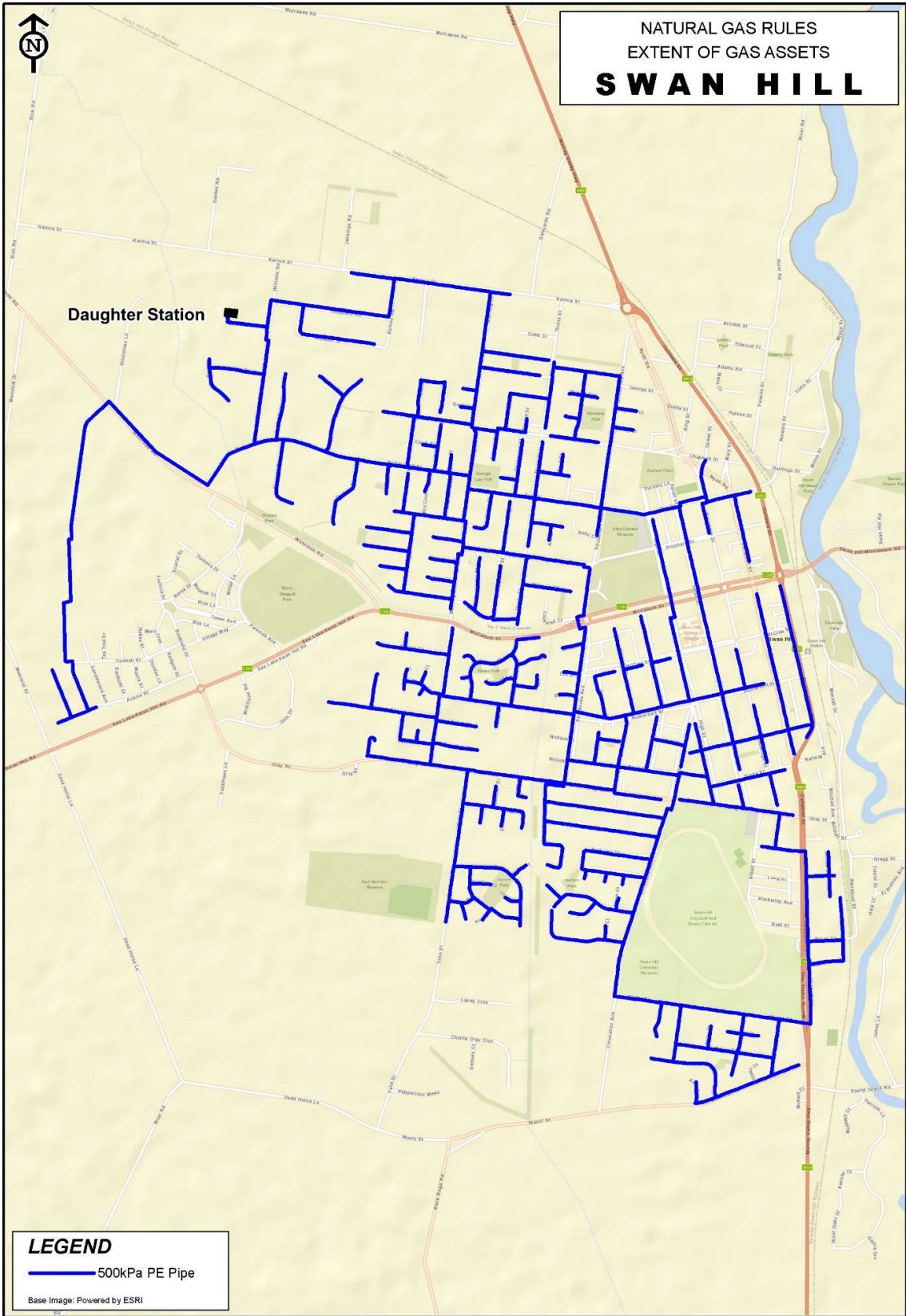


LEGEND

— 500kPa PE Pipe

Base Image: Powered by ESRI





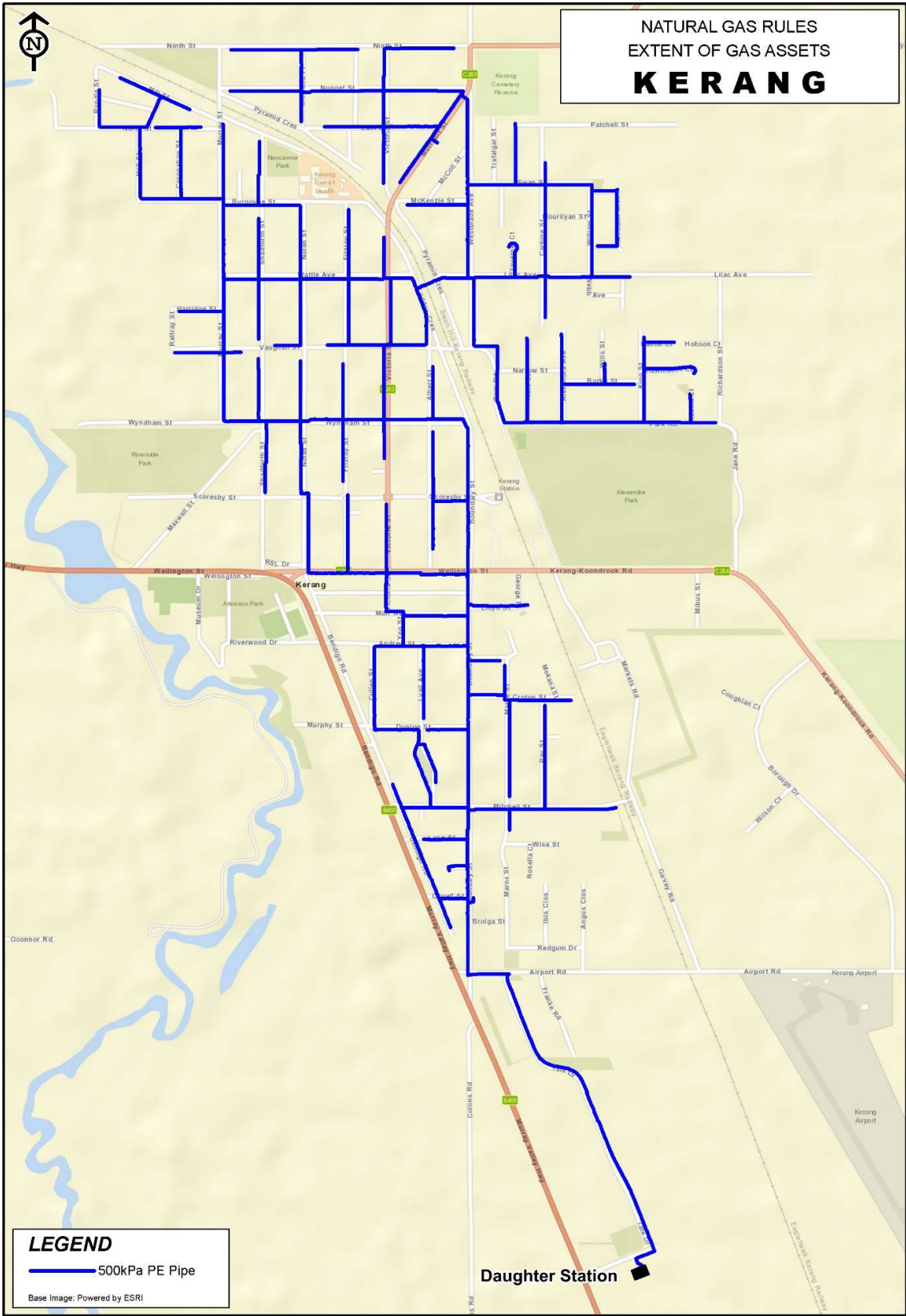
NATURAL GAS RULES
EXTENT OF GAS ASSETS
SWAN HILL

Daughter Station

LEGEND

— 500kPa PE Pipe

Base Image: Powered by ESRI



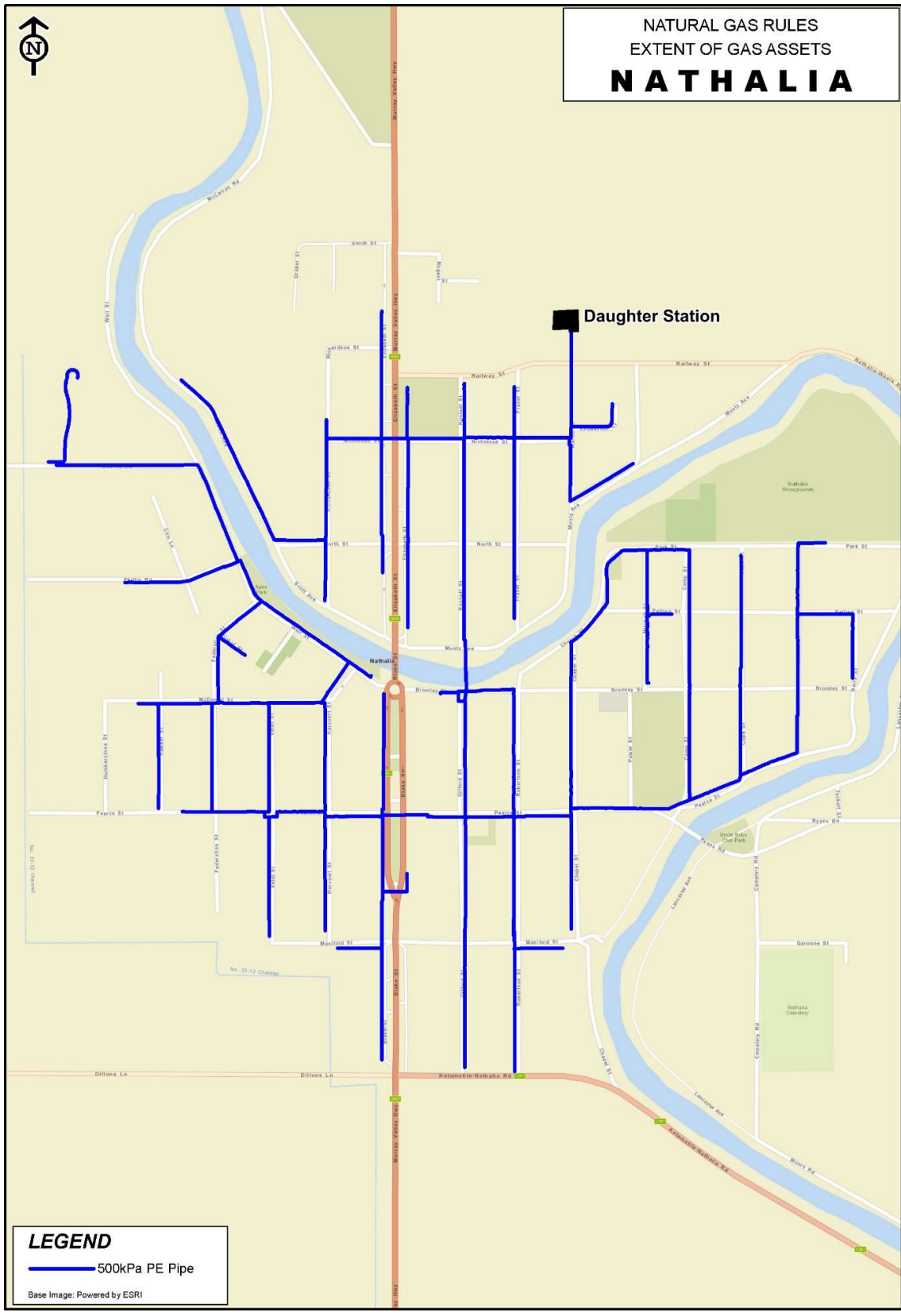
NATURAL GAS RULES
EXTENT OF GAS ASSETS
KERANG

LEGEND

— 500kPa PE Pipe

Base Image: Powered by ESRI

Daughter Station



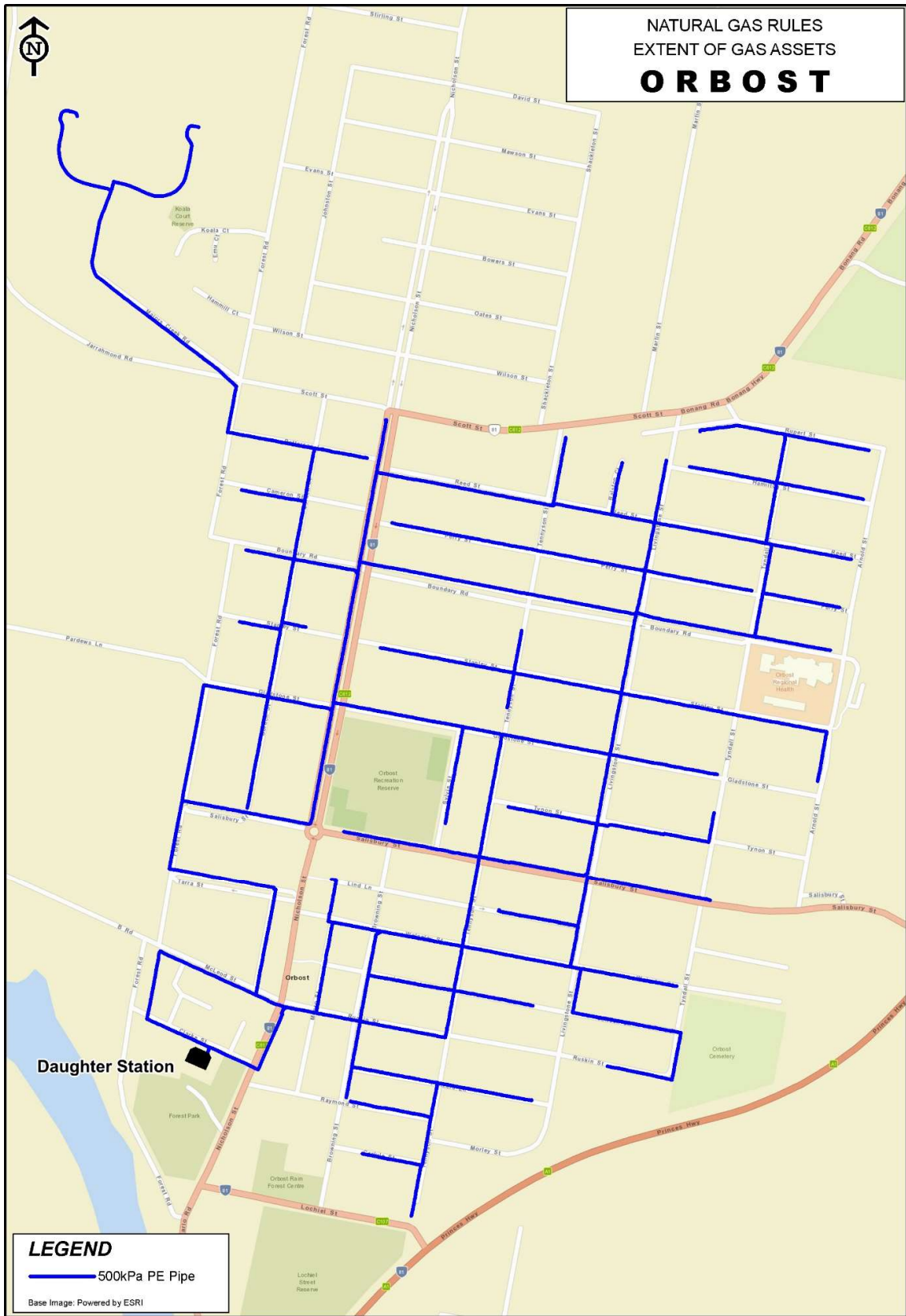
NATURAL GAS RULES
EXTENT OF GAS ASSETS
NATHALIA

Daughter Station

LEGEND

— 500kPa PE Pipe

Base Image: Powered by ESRI



NATURAL GAS RULES
EXTENT OF GAS ASSETS
ORBOIST



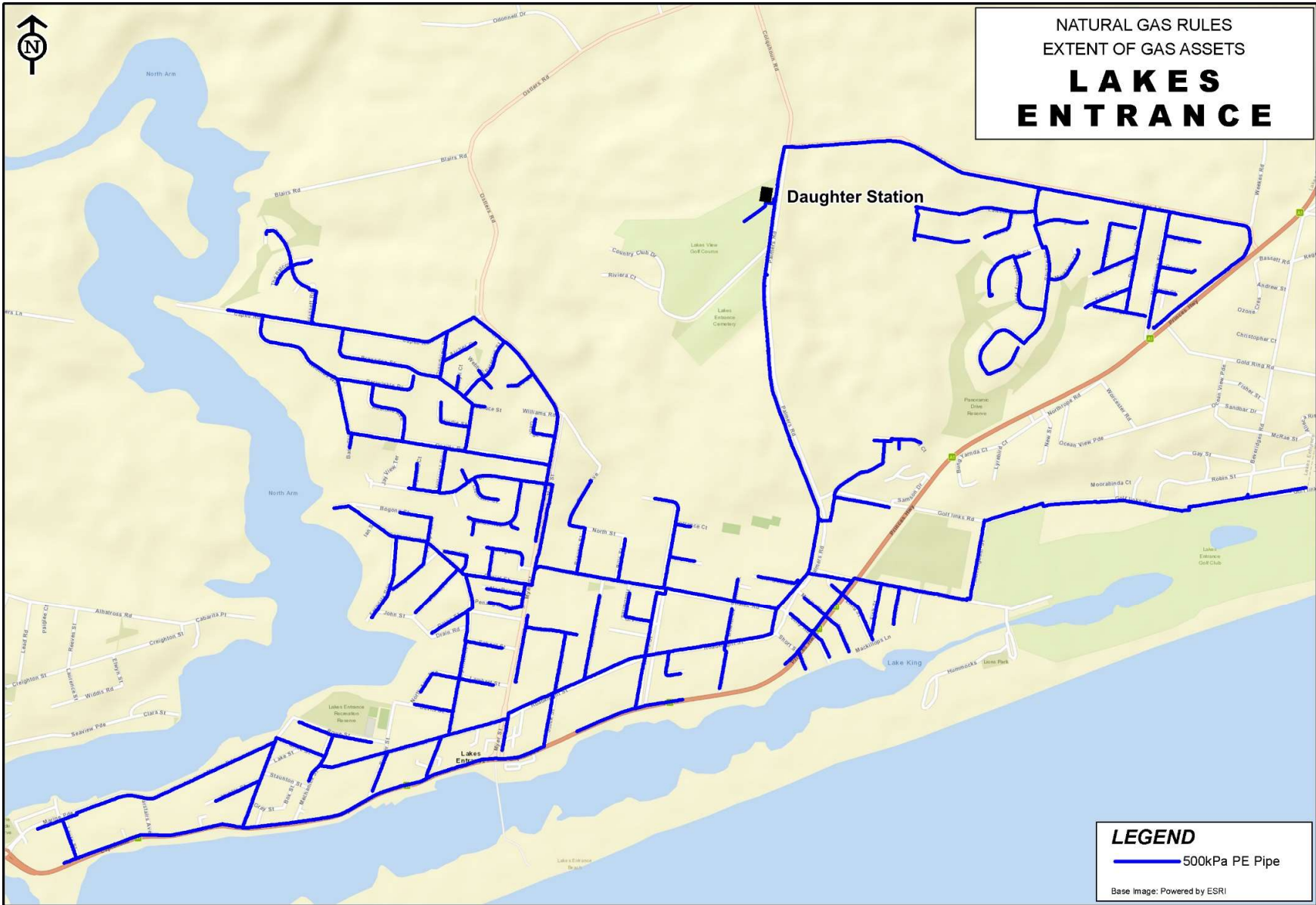
LEGEND

— 500kPa PE Pipe

Base Image: Powered by ESRI



NATURAL GAS RULES
EXTENT OF GAS ASSETS
**LAKES
ENTRANCE**



Daughter Station

LEGEND

— 500kPa PE Pipe

Base Image: Powered by ESRI