

Tas Gas Networks Pty Ltd – Transmission Pipeline

Pipeline Information

| | |
|---|--|
| Pipeline Class | Transmission |
| Nameplate rating | 12.04TJ/day |
| Receipt points | Gawler Ulverstone Metering and Offtake Facility |
| Delivery points | Simplot Metering and Distribution Regulating Station, Mason Street, Ulverstone |
| Schematic map of the pipeline | See rear of document |
| Any technical or physical characteristics of the pipeline that may affect access to or use of the pipeline or the price for pipeline services on the pipeline | Length of Pipeline: 4.8km Pressures: ranges from 2,000kPa to 10,200kPa |
| Any policies that may affect access to or use of the pipeline or the price for pipeline services | Nil |

Pipeline Service Information

| Service name | Description | Locational limitations on availability | Priority ranking |
|--------------|--|--|------------------|
| Firm Forward | Receipt to Delivery Point gas transportation service | Limited by individual pipelines or network supply capabilities | 1 |

Tas Gas Networks Pty Ltd – Distribution Pipeline

Pipeline Information

| | |
|---|--|
| Pipeline Class | Distribution |
| Quantity of natural gas that can be transported though each gate station on the distribution pipeline in any 24 hour period | Bridgewater (Hobart) - 24.09 TJ/day Bell Bay - 6.68 TJ/day Launceston - 5.90 TJ/day Westbury - 2.32 TJ/day Longford - 2.25 TJ/day Devonport - 5.56 TJ/day Ulverstone - 11.59 TJ/day Burnie - 4.18 TJ/day Wynyard - 6.68 TJ/day |
| Delivery points | Bridgewater (Hobart), Bell Bay, Launceston, Westbury, Longford, Devonport, Ulverstone, Burnie and Wynyard all connected to the TGP pipeline via Metering/Offtake Stations |
| Schematic map of the pipeline | See rear of document |
| Any technical or physical characteristics of the pipeline that may affect access to or use of the pipeline or the price for pipeline services on the pipeline | Length of Pipeline: 834km Pressures: Ranges from 2,500kPa; 1000kPa and 500kPa |
| Any policies that may affect access to or us of the pipeline or the price for pipeline services | Nil |

Pipeline Service Information

| Service name | Description | Locational limitations on availability | Priority ranking |
|--------------|--|--|------------------|
| Firm Forward | Receipt to Delivery Point gas transportation service | Limited by individual pipelines or network supply capabilities | 1 |

NATURAL GAS RULES - USER ACCESS GUIDE
 EXTENT OF GAS ASSETS
BELL BAY

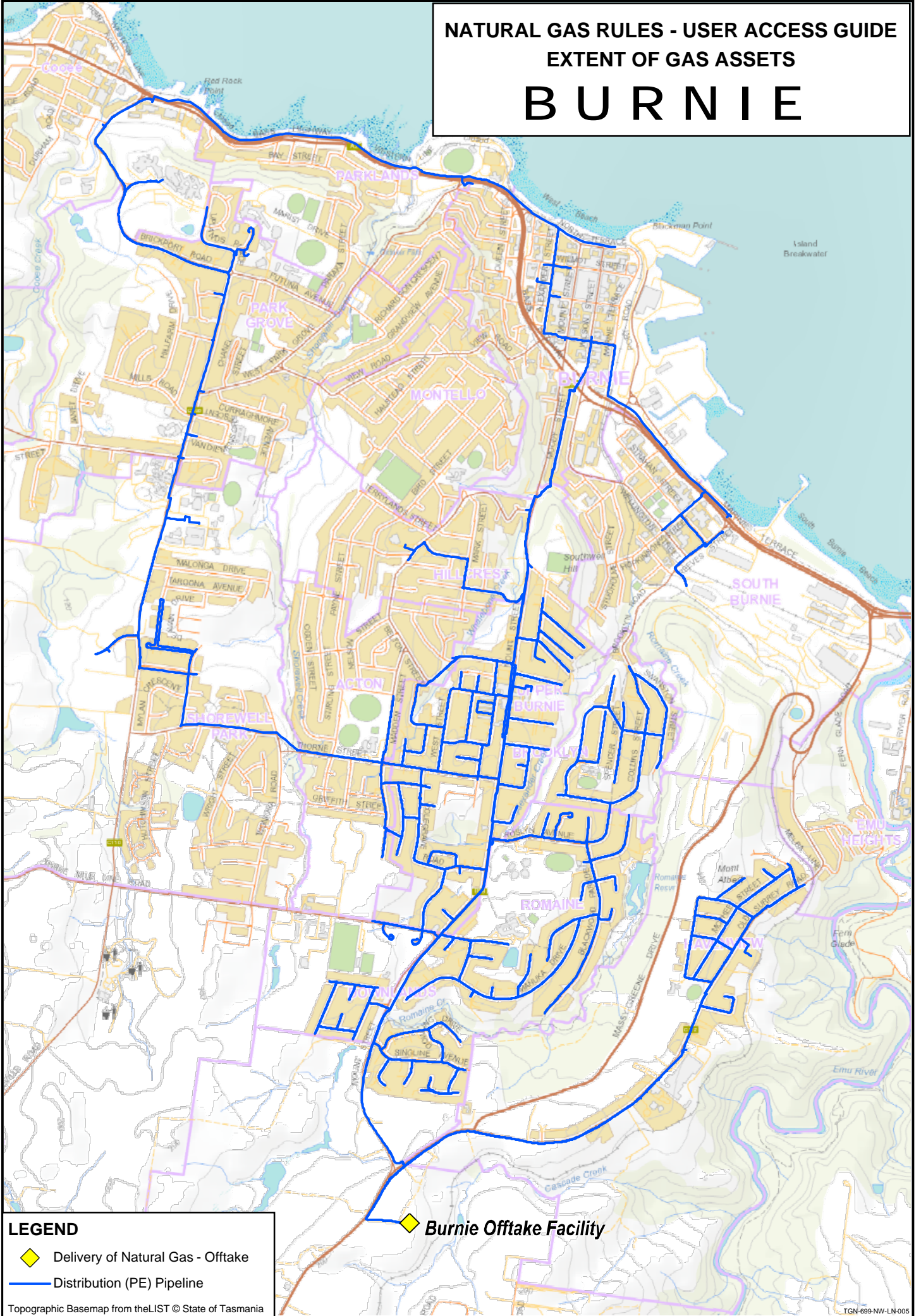


LEGEND

- ◆ Delivery of Natural Gas - Offtake
- Distribution (PE) Pipeline

Topographic Basemap from theLIST © State of Tasmania

NATURAL GAS RULES - USER ACCESS GUIDE
 EXTENT OF GAS ASSETS
BURNIE



LEGEND

- ◆ Delivery of Natural Gas - Offtake
- Distribution (PE) Pipeline

Topographic Basemap from theLIST © State of Tasmania

NATURAL GAS RULES - USER ACCESS GUIDE
EXTENT OF GAS ASSETS

DEVONPORT



◆ Devonport Offtake Facility

LEGEND

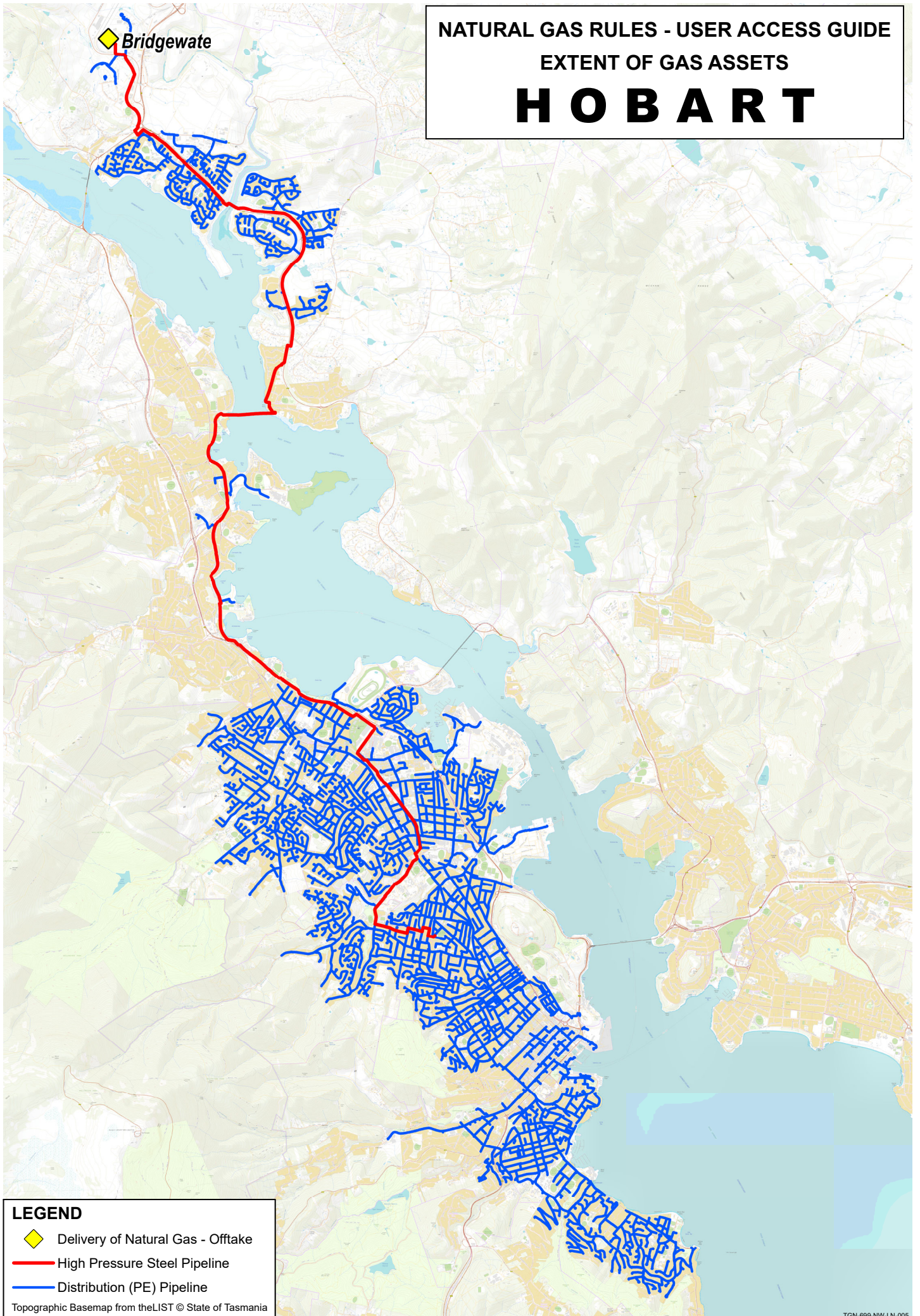
- ◆ Delivery of Natural Gas - Offtake
- High Pressure Steel Pipeline
- Distribution (PE) Pipeline

Topographic Basemap from theLIST © State of Tasmania




NATURAL GAS RULES - USER ACCESS GUIDE

EXTENT OF GAS ASSETS

HOBART



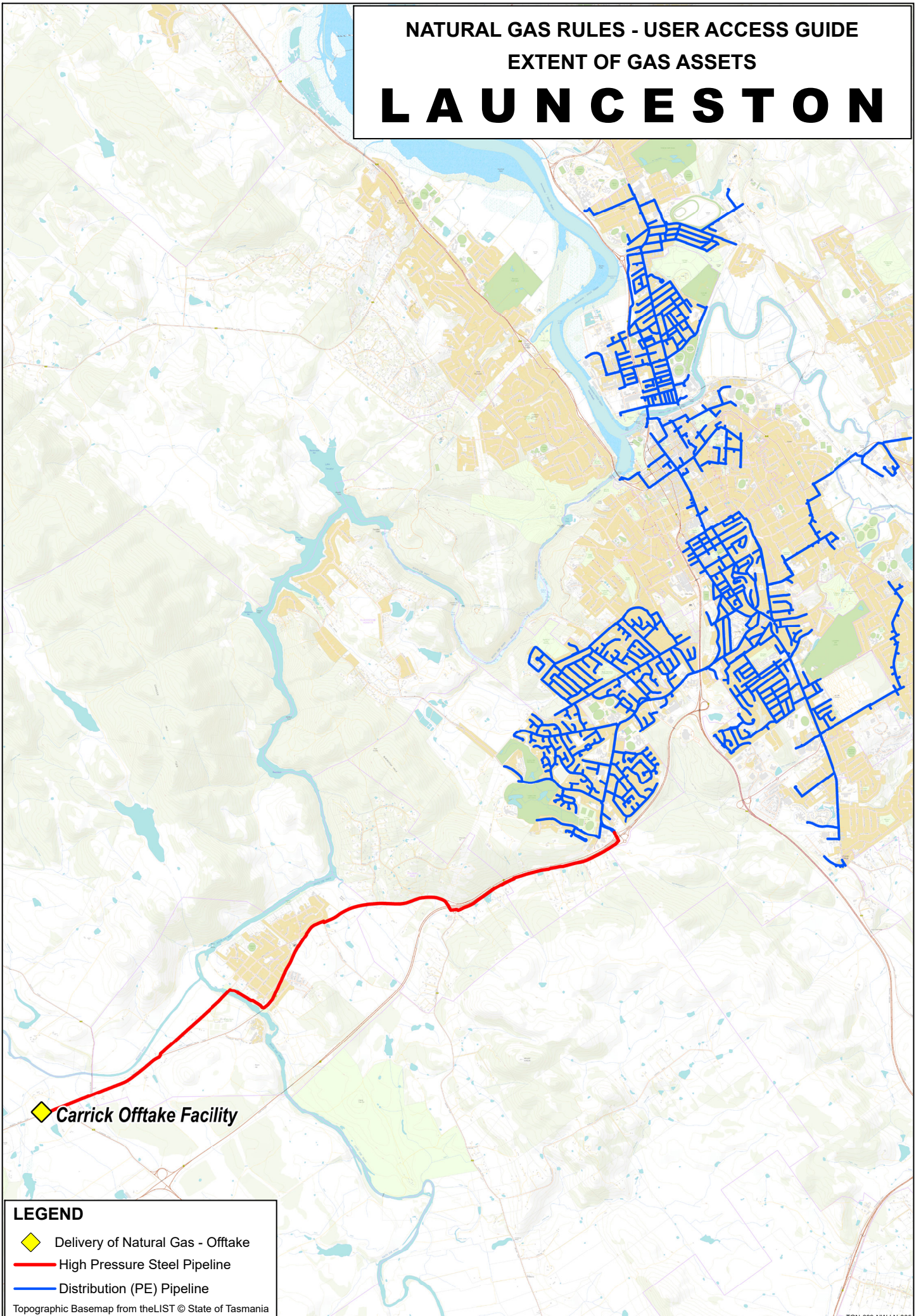
LEGEND

-  Delivery of Natural Gas - Offtake
-  High Pressure Steel Pipeline
-  Distribution (PE) Pipeline




Topographic Basemap from theLIST © State of Tasmania

NATURAL GAS RULES - USER ACCESS GUIDE
EXTENT OF GAS ASSETS

LAUNCESTON



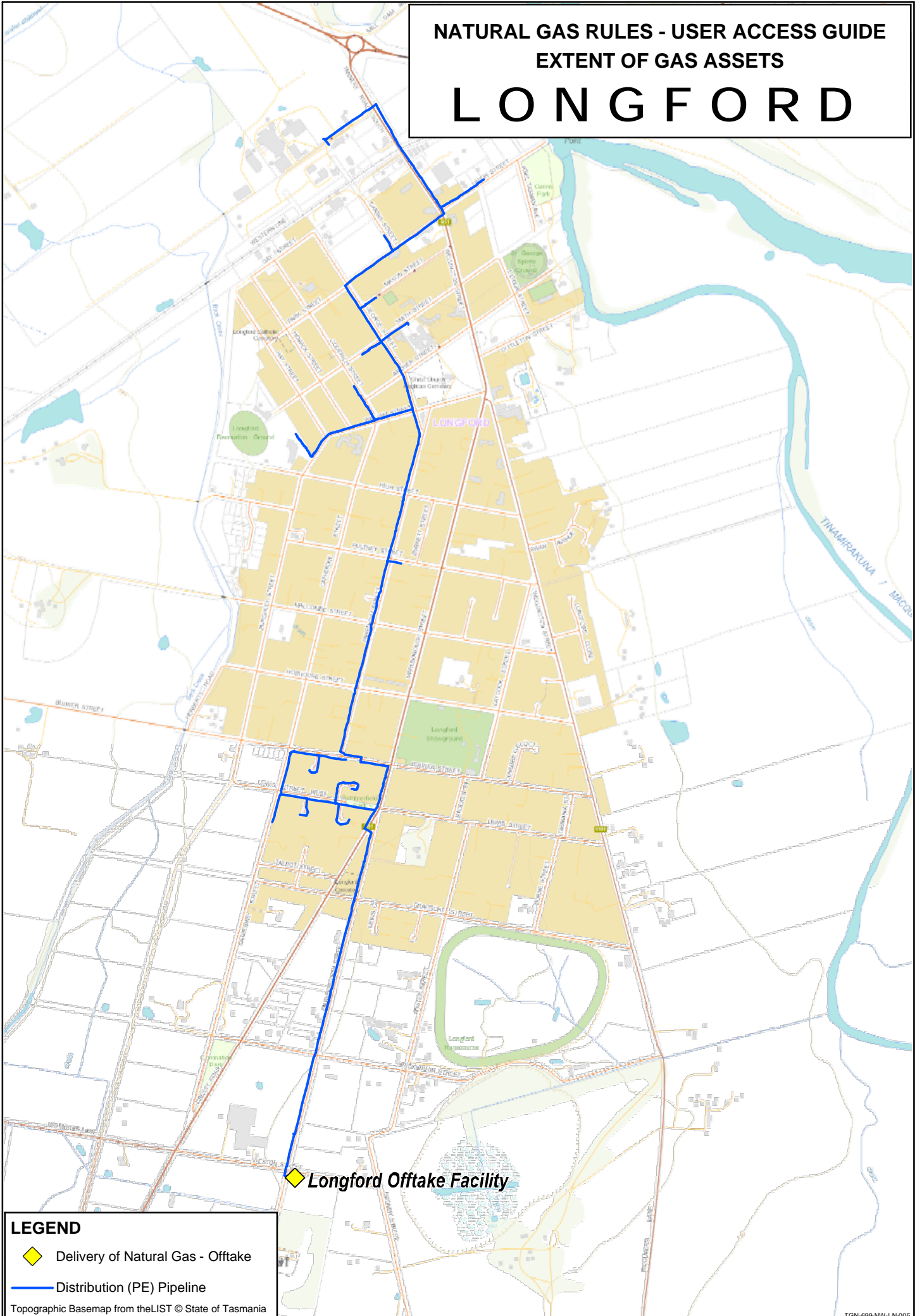
LEGEND

-  Delivery of Natural Gas - Offtake
-  High Pressure Steel Pipeline
-  Distribution (PE) Pipeline

Topographic Basemap from theLIST © State of Tasmania

NATURAL GAS RULES - USER ACCESS GUIDE
EXTENT OF GAS ASSETS

LONGFORD

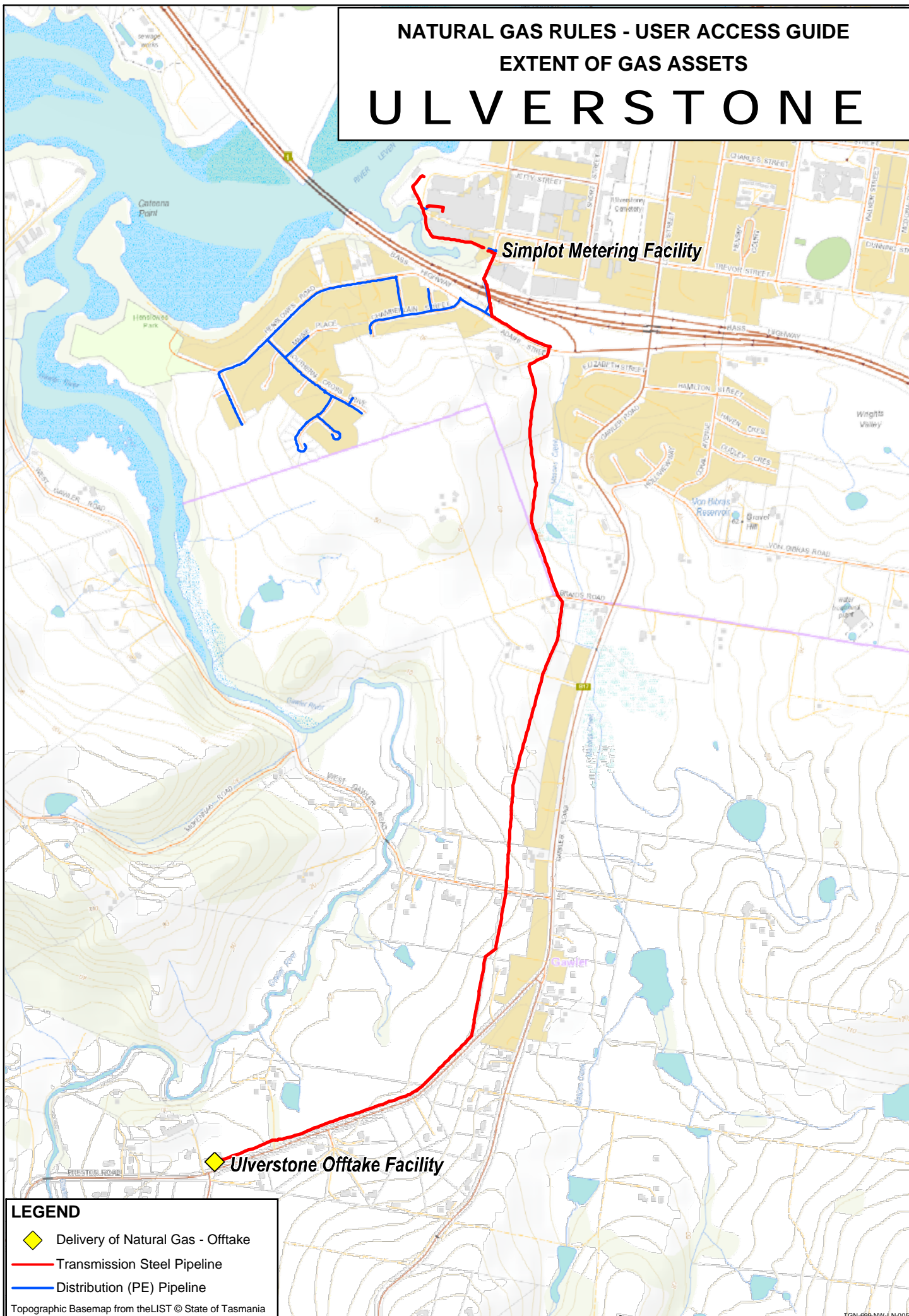


LEGEND




- ◆ Delivery of Natural Gas - Offtake
- Distribution (PE) Pipeline

Topographic Basemap from theLIST © State of Tasmania

NATURAL GAS RULES - USER ACCESS GUIDE
EXTENT OF GAS ASSETS
ULVERSTONE



LEGEND

-  Delivery of Natural Gas - Offtake
-  Transmission Steel Pipeline
-  Distribution (PE) Pipeline

Topographic Basemap from theLIST © State of Tasmania

NATURAL GAS RULES - USER ACCESS GUIDE
EXTENT OF GAS ASSETS
WESTBURY



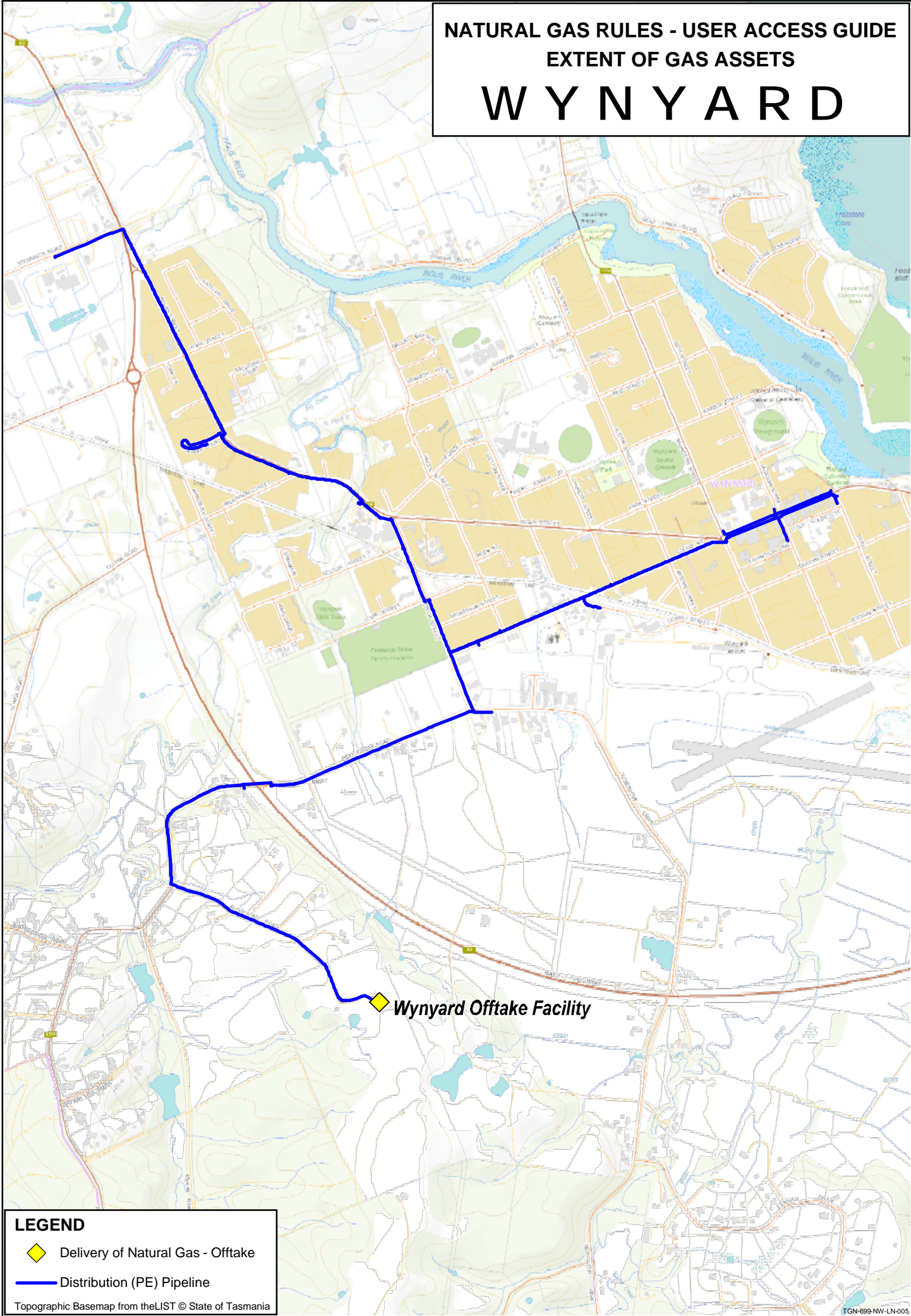
LEGEND

- Yellow Diamond: Delivery of Natural Gas - Offtake
- Blue Line: Distribution (PE) Pipeline

Topographic Basemap from theLIST © State of Tasmania

NATURAL GAS RULES - USER ACCESS GUIDE
EXTENT OF GAS ASSETS

WYNYARD



LEGEND

- ◆ Delivery of Natural Gas - Offtake
- Distribution (PE) Pipeline

Topographic Basemap from theLIST © State of Tasmania